

Powerline Connection Adapter 500 Mbps Chipset

Installation manual
Istruzioni d'installazione (retro)

Manuel d'installation (2ème dépliant)
Installationsanleitung (2-tes Faltblatt)




myStrom AG
Alte Tiefenastrasse 6
3050 Bern / Switzerland
www.mystrom.ch

Quick-Start

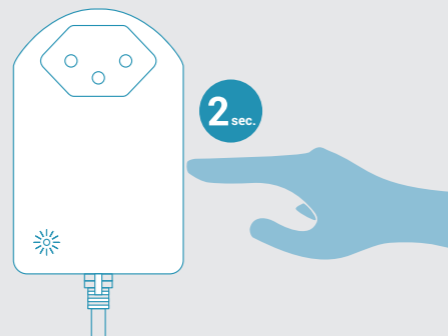
Installing the adapter


Important
Plug the adapter directly into the wall power socket to reduce interferences.

- 1 Plug the new adapter directly into any wall power socket next to the device you want to connect.

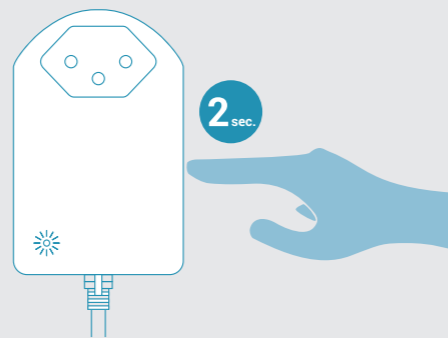
Connect the adapter to any device that can access the Internet (e.g. PC, Internet-TV-Box or game console) using the provided network cable.
- 2 Push the  button of the adapter connected with the DSL-/Fiber-Gateway for 2 seconds.

The LED starts to blink white.
If it does not blink, please repeat this step.



- 3 Push the  button of the new adapter for 2 seconds.

The LED starts to blink white.

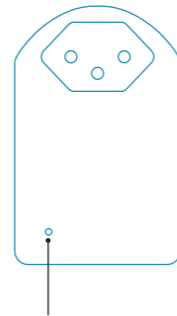


- 4 The LEDs of both adapters light up continuously in white as soon as the Powerline connection is established. Your device is now connected to the Internet.

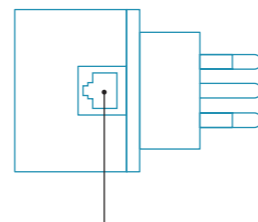
All done!

The adapter in detail

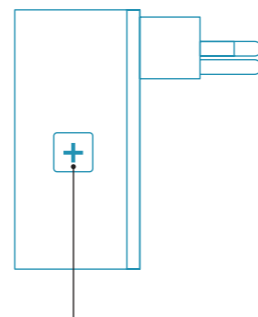
Ports, button and LED



LED	
Off	Not powered
White	Powerline connection OK
Blinks white fast	Pairing Mode
Blinks white slowly	Eco/Energy Saving Mode
Blinks red	No Powerline connection



Ethernet-Port
Connect your DSL-/Fiber-Gateway or any other device with an Ethernet port (e.g. PC, Internet-TV-Box or game console).




Button	
Pairing	Reconnect the adapters or connect them to an existing Powerline network – press 2 s
Reset	Sets the adapter to its factory setting. Pairing is lost – press 10 s

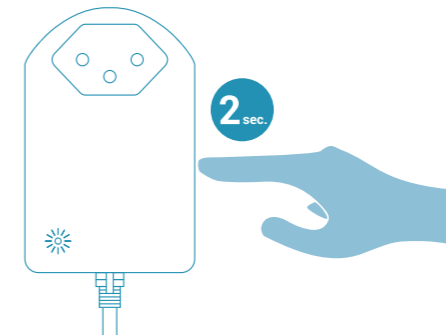
Troubleshooting tips


Reconnect the adapters to each other (Pairing)

In case the adapters no longer communicate with each other or have been reset, you have to pair them again. To execute the Pairing process, plug the adapters directly into the wall sockets in the same room.

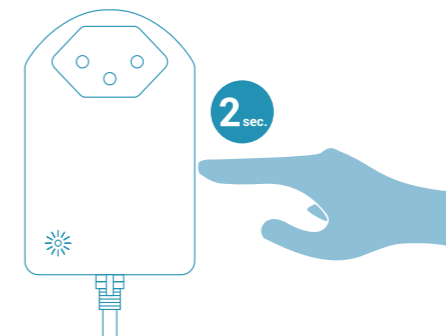
- 1 Push the  button of the adapter connected with the DSL-/Fiber-Gateway for 2 seconds.

The LED starts to blink white.
If it does not blink, please repeat this step.




- 2 Push the  button of the 2nd adapter for 2 seconds.

The LED starts to blink white.
If it does not blink, please repeat this step.



- 3 The LEDs of both adapters light up continuously in white as soon as the Powerline connection has been successfully established. If the Pairing was not successful, please try again. And before Pairing them again, please reset both adapters.

In order to do so, press the  button of each adapter for 10 seconds.

FAQ and Support

Always connect the Powerline adapters to the wall socket - why?

Powerline adapters react sensitively to interference sources that are also connected to your electrical network. Those interference sources can be power adapters, chargers etc. When you plug the Powerline adapters directly into the wall socket and then connect the devices to the Powerline adapter, the interferences are minimized thanks to the integrated filter - so the adapters work more reliably. For this reason the adapters cover all 3 plugs of your wall socket.

Possible interferences

Interferences occur mainly when you are using the following devices - microwave oven, hair dryer, vacuum cleaner, iron, power drill ... Those interference sources can lead to a brief interruption of the connection or - in case you are watching Internet-based TV - to a sound or picture freeze.

Powerline is not working

The good functioning of Powerline strongly depends on the existing electrical network. If the adapters are not working, plug 2 adapters to wall sockets in the same room. If the LED lights up continuously in white, the Powerline adapters are working without any problems. The reason is most probably your electrical network that may contain old fuses or phase jumps. In this case your electrician might be able to help. Otherwise you can return the adapters after 14 days and get your money back.

You can find more information about using or troubleshooting the Powerline adapters online on www.mystrom.ch/en/help/faq

Support

If you have a general question please use our contact form on www.mystrom.ch/en/help/contacts